

Achiever DPM2-52 DU 57 ft Tracked Aerial with Jib DUAL UNIT BOOM SPECIFICATIONS

<u>GENERAL DATA</u>																															
<table style="width: 100%; border-collapse: collapse;"> <tr> <td style="width: 30%;">Max. working height</td> <td style="width: 20%;">55'</td> <td style="width: 30%;">Basket capacity</td> <td style="width: 20%;"></td> </tr> <tr> <td>with basket elevator</td> <td>57'</td> <td>(Jib not in use)</td> <td>550 lbs</td> </tr> <tr> <td>Max. side reach</td> <td>31'-6"</td> <td>(Jib in use)</td> <td>400 lbs</td> </tr> <tr> <td>Stowed travel height</td> <td>9'-3" (approx.)</td> <td>Max. jib and winch capacity</td> <td>1,000 lbs</td> </tr> <tr> <td>Extension boom travel</td> <td>120"</td> <td>Articulating arm travel</td> <td>-0° to +80°</td> </tr> <tr> <td>Main boom travel</td> <td>-35° to +80°</td> <td>Base installed weight</td> <td>16,650 lbs (approx.)</td> </tr> <tr> <td>Elevator travel</td> <td>22"</td> <td></td> <td></td> </tr> </table>	Max. working height	55'	Basket capacity		with basket elevator	57'	(Jib not in use)	550 lbs	Max. side reach	31'-6"	(Jib in use)	400 lbs	Stowed travel height	9'-3" (approx.)	Max. jib and winch capacity	1,000 lbs	Extension boom travel	120"	Articulating arm travel	-0° to +80°	Main boom travel	-35° to +80°	Base installed weight	16,650 lbs (approx.)	Elevator travel	22"					
Max. working height	55'	Basket capacity																													
with basket elevator	57'	(Jib not in use)	550 lbs																												
Max. side reach	31'-6"	(Jib in use)	400 lbs																												
Stowed travel height	9'-3" (approx.)	Max. jib and winch capacity	1,000 lbs																												
Extension boom travel	120"	Articulating arm travel	-0° to +80°																												
Main boom travel	-35° to +80°	Base installed weight	16,650 lbs (approx.)																												
Elevator travel	22"																														
<u>STANDARD FEATURES</u>																															
<p>Center top mounted winch & jib 24" x 42" x 42" fiberglass basket with step Rubber boom support Fiberglass extension boom Shear ball rotation gear Proportional, open center hydraulic controls Safety harness and 6' decelerating lanyard 360° continuous rotation 180° basket rotator 10 micron filter in return line Hyd leveled basket (power stow at upper controls) Hydraulic basket leveling at lower controls (2nd location) Upper 4 axis single hand joystick control lever</p>	<p>Basket rotator, winch, and jib controls with lockouts in upper control pod Lower control levers with upper control override Lower winch control Deck step basket mounting Hydraulic jib tilt Manual jib extension Non-relube, maintenance-free bushings, spherical cylinder rod ends Engine start/stop from basket 46 KV category "C" insulation 24" pedestal height for tracked vehicle mounting Epoxy primer with white finish color Two maintenance/operators manuals One year parts and labor warranty</p>																														
<u>AVAILABLE BOOM OPTIONS</u>																															
<p>Boom:</p> <p>Main boom fiberglass insert (provides 14" of insulation when fully retracted) Articulating arm glass insert (12" insulation gap)</p> <p>Basket:</p> <p>Basket liner w/step (24" x 42" basket) Rigid basket cover with lanyard Rigid basket & upper control cover w/lanyard Tool tray (8" X 19" X 9") Tool tray (9" X 14" X 18") Tool tray fiberglass (7" x 7" x 16")</p>	<p>Electrical:</p> <p>Controls w/high electrical resistant components (HERC) - required for category "C" Boom overstay protection 12 volt emergency hydraulics: boom rotation, lowering and all outrigger functions</p> <p>Hydraulic:</p> <p>Hydraulically extendible jib Tool circuit at basket, manual control Tool circuit at base, manual control Hose reel on deck</p> <p>Miscellaneous:</p> <p>Additional manuals</p>																														
<p>Controls Mounted between Basket & Boom</p>		<p>All Specifications + or - 2%</p>																													
CARRIER OPTIONS on PAGE 2																															

Achiever DPM2-52 DU 57 ft Tracked Aerial with Jib CARRIER SPECIFICATIONS

<p><u>DIMENSIONS / WEIGHT</u></p> <p>Overall Length 251" boom tip to bucket end 185" between stowed outriggers</p> <p>Overall Width 101" without side ladders</p> <p>Height 111" to top of stowed boom</p> <p>Ground Clearance 16"</p> <p>Weight 16,650 lbs base vehicle</p> <p>GVWR 24,000 lbs</p> <p>Deck 43 ft² (approx. 72"L x 87"W")</p> <p><u>PERFORMANCE</u></p> <p>Maximum speed 8 mph loaded</p> <p>Turning radius 0 ft</p> <p>Climbing Ability</p> <p style="padding-left: 20px;">- Uphill 40° (84%)</p> <p style="padding-left: 20px;">- Side-hill 15° (27%)</p> <p>Ground Pressure</p> <p style="padding-left: 20px;">2.29 PSI (no load) 29" tracks</p> <p style="padding-left: 20px;">2.63 PSI (loaded) 29" tracks</p> <p style="padding-left: 20px;">2.0 PSI (no load) 33" tracks</p> <p style="padding-left: 20px;">2.3 PSI (loaded) 33" tracks</p> <p>Working Range 12 hours (no load)</p> <p><u>ENGINE</u></p> <p>Make Deutz AG Tier 4</p> <p>Model TCD 3.6 L4, 4 cylinder turbo charged diesel</p> <p>Horsepower 134 HP at 2,300 RPM</p> <p>Torque 369 ft lbs at 1,600 RPM</p> <p>Displacement 3.6 liters</p> <p>Fuel capacity 40 gals</p> <p>DEF Tank 2.6 gals</p>	<p><u>FRAME / SUSPENSION</u></p> <p>Type Welded tub</p> <p>Axle Torsion axle</p> <p>Tires Solid rubber</p> <p>Suspension system:</p> <ul style="list-style-type: none"> ➤ 2 independent idler wheels with oil bath hubs ➤ 8 solid wheels with grease hubs and 8 dust cap retainers ➤ 2 rear drive sprockets <p><u>POWER TRAIN FOR HYDROSTATIC DRIVE</u></p> <p>Transmission Hydrostatic, 2-speed</p> <p>Service Brakes Positive deceleration through the hydrostatic transmission</p> <p>Parking brakes Multi-disc, spring applied & pressure released</p> <p><u>ELECTRICAL</u></p> <p>Voltage 12v</p> <p>(2) batteries, capacity 2x 1,060 CCA</p> <p>Alternator Capacity 120 Amps</p> <p>Ground Negative</p> <p><u>TRACKS</u> 5-ply rubber belts with 29" rubber cross links with heat treated aluminum inserts</p> <p><u>STEERING</u> Independent dual joysticks with cable control for each track</p>
<u>STANDARD FEATURES</u>	
<p>1-Man Open Cab ROPS certified to 24,000 lbs</p> <p>Roll Over Protection Structure ISO 3471:2008</p> <p>Seat with mechanical suspension, 2-point seat belt</p> <p>Full instrumentation, illuminated panel gauge</p> <p>Fire extinguisher, backup alarm and horn</p> <p>LED high powered lights: 2 front & 1 rear on cab, 1 strobe on top, rear back up light</p> <p>Cab entrance step, 2x removable side deck ladders</p> <p>120v block heater & glow plugs, muffler</p> <p>12v primary fuel filter heater</p>	<p>Secondary fuel filter with water separator</p> <p>Oil cooler for hydraulic reservoir</p> <p>Electric engine shut down system</p> <p>2" receiver socket, front and rear</p> <p>Front and rear rectangular ground lugs</p> <p>(4) 59" radial outriggers w/18"x20" feet, 45° mounts</p> <p>(4) 18,000 lb D-Rings</p> <p>Wooden side wall/deck</p> <p>2 sets of parts & service manuals</p> <p>Standard one year warranty</p>

*Specifications subject to change without notice.

DPM2-52 DU CARRIER OPTIONS & ACCESSORIES

Front bumper in place of plow
Front 2 way plow (light brush clearing blade)
19" Height extension for plowing snow
Front plow blade with float position

DPM2-52 DU Carrier Options continued on next page

Achiever DPM2-52 DU Carrier Options continued

16,500 lb electric winch with front wiring & remote control (wired, 12 ft lead)
Electric winch rear wiring
(2) side receivers for electric winch with wiring
Front mount storage for aerials for electric winch when hydraulic winch equipped
18,000 lb hydraulic winch, fixed front mount

Cab Options

Driver's wire mesh screen (open cab)
Driver's left side wire mesh door and side wall (open cab)
Driver's right side wire mesh screen (open cab)
Driver's rear wire mesh screen (open cab)
Aluminum escape hatch for open cab (required when four sides wire mesh)
Steel escape hatch for open or closed cab (adds FOPS Certification)
Opening sunroof (hinged escape hatch with adjustable opening)
Tinted safety glass escape hatch with adjustable opening (not FOPS certified)
Protective brush guard for front LED Lights
Cab mounted front brush guard for closed cab
1 Man Closed Cab ROPS certified to 24,000 lbs includes: Aluminum escape hatch Sliding left & right side window Cab heater & circulation fan Front windshield on/off wiper & windshield washer Door with dual locking system
Front windshield intermittent wiper (closed cab)
Sun visor
Driver's 3 point seat belt
Street side and / or curb side rear view mirror
Street side rear view mirror with electric heating
Back up camera with heated lens and 7" in-cab waterproof display
Outrigger deployed in-cab warning light
Premium cab sound & heat insulation
DC Comfort air conditioning 6,000 BTU/hr, 12v

Lighting Options

GoLight Stryker spotlight on top of cab with guarding & in cab & hand held remote control
2x 120 watts LED light bars (behind the cab, swiveling & one fixed over the engine cover)
4x 18 watts around the vehicle ground illumination LEDs (low profile 40° down-angle)
DOT Road lighting (includes outrigger mounted clearance lights)
Outrigger mounted clearance lights

Achiever DPM2-52 DU Carrier Options continued on next page

Achiever DPM2-52 DU Carrier Options continued Engine & Cold Weather Options

Spark arrestor
12v engine coolant heater, 17,000 Btu with 7 day programmable timer
120v hydraulic oil tank heater
120v battery charger
Synthetic engine oil
Winter bridge & engine cover
Insulated battery box
Coolant battery heater
2x 120v battery heaters
Glycol coolant
Synthetic hydraulic oil
1,800 watt gas powered portable generator / inverter with on deck storage

Track Options

Change 29" to 33" rubber tracks
Ice claws for tracks (17 each side)

Vehicle Options / Features

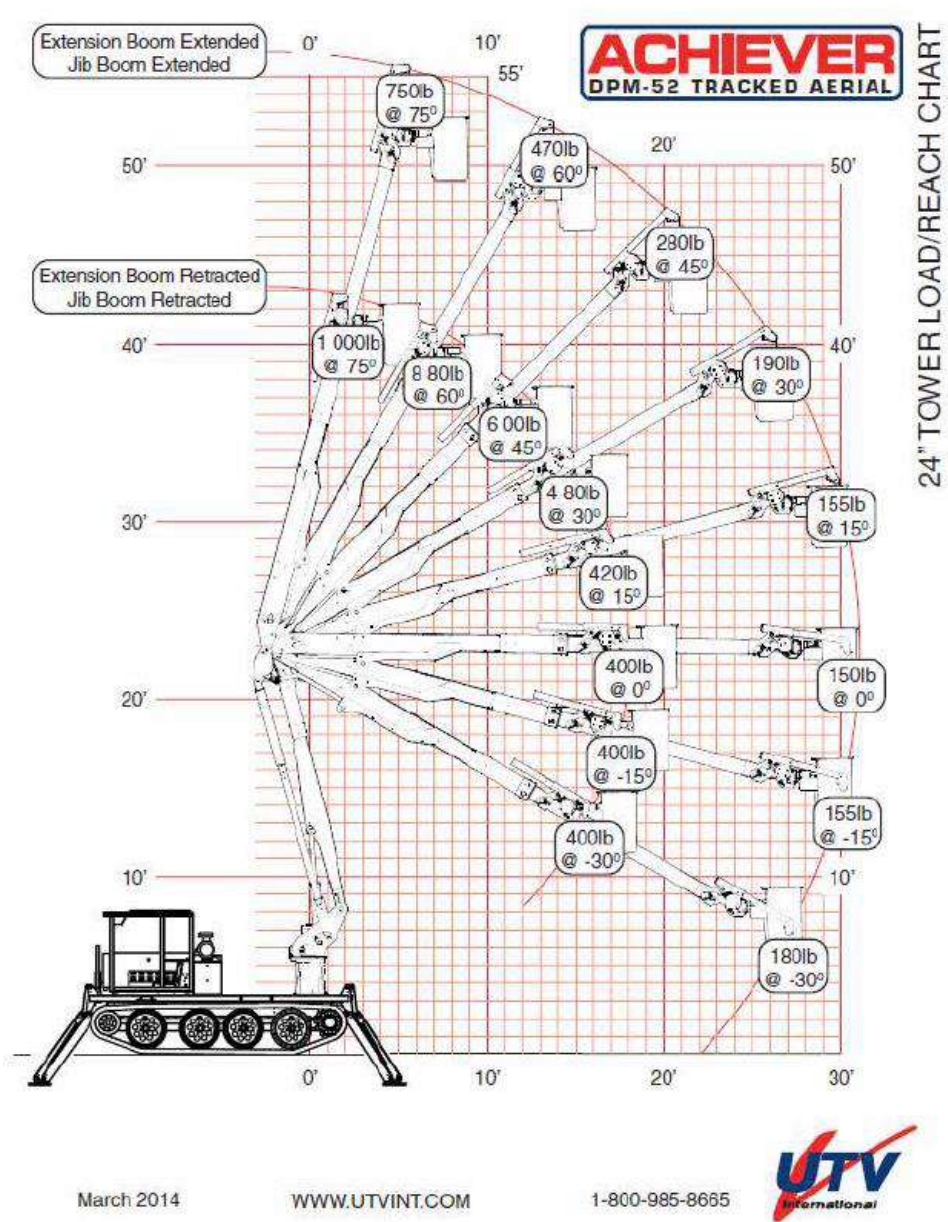
Tool box on deck (front right side)
Cargo tie downs on deck, 2,000 lb capacity (2x D-rings, 2x tie down posts)
Non slip coating on deck
Change 59" to extra long front outriggers (71 in) for higher lift on hills w/18"x20" feet (allows deck levelling to within 5° on 12° slopes)
Change 59" to extra long rear outriggers (71 in) for higher lift on hills w/18" x 20" feet (allows deck levelling to within 5° on 12° slopes)
Ice cleats for outrigger feet (4 each foot)
Outrigger feet ice cleat ready
(Set of 4) 24"x24"x1" soft outrigger pads with side deck storage
(8) road wheel oil hubs
Hydraulic tools outlet on deck with hose reel with twin orange dielectric hoses 3/8"(dia) x 30'(Lg) and flow control
Cable grounding reel on deck, spring loaded, 50 ft 1/0 black cable & clamp
Pintle hook
Maintenance kit (high performance filter set for first 100 hour maintenance Return & Supercharge Filters)
Additional sets of boom and carrier manuals

Additional Available Options

Recommended spare parts for remote operations
One full day on site operations and maintenance training

Other options available upon request

Achiever DPM2-52 DU 57 ft Tracked Aerial with Jib +22" Vertical with Elevator Up



March 2014

WWW.UTVINT.COM

1-800-985-8665



BUCKET/JIB USAGE RESTRICTIONS

2 MAN BUCKET

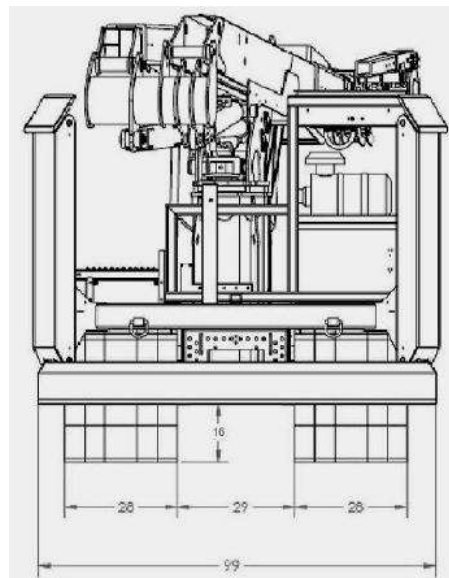
- Bucket capacity = 550lb
- Bucket capacity with liner = 500lb
- Jib use:
 - Bucket capacity restricted to 400lb
 - Bucket capacity with liner restricted to 350lb
 - Jib capacity as shown on load chart



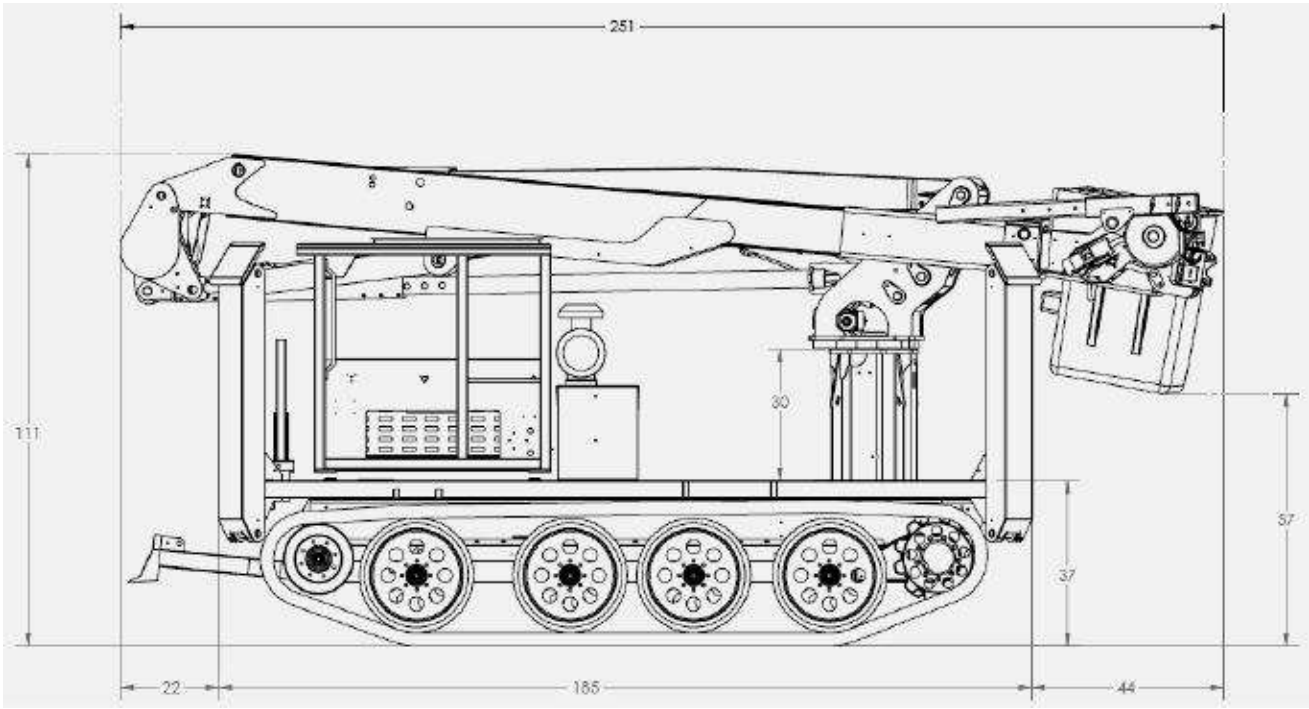


DPM2-52 Top Center Mount Winch & Jib with Elevator

Achiever DPM2-52 DU Dimensions



Achiever DPM2-52 DU Dimensions



Achiever DPM2-52 DU Accessibility

UTV CARRIER OUTFITTED WITH DUR-A-LIFT
RT02-DAL DPM2-52DU
MOUNTING PACKAGE

