

# ACHIEVER

## RT-02 DD DIGGER DERRICK

*Power & Traction in Action*

### DIMENSIONS / WEIGHT

Overall Length	220" With boom in storage position
Overall Width	101" With outriggers in storage position
Overall Height	118" With boom in storage position
Ground Clearance	16"
Weight & Payload	16,650 lbs (Base vehicle with derrick)
- Basic Vehicle	24 000 lbs
- GVW	
Deck Area	48 ft <sup>2</sup> (approx. 87" x 80")

### PERFORMANCE DATA

Maximum speed	8 mph
Inside turning radius	0 ft.
Climbing Ability	
- Uphill	40° (90%)
- Side-hill	20° (45%)
Ground Pressure (empty)	2.29 PSI at 6" penetration (no load)
Ground pressure (loaded)	2.82 PSI at 6" penetration (loaded)
Normal Driving Range	12 Hours

### ENGINE

Make	Deutz AG
Model	TCD 3.6 L4, 4 cylinder Turbo Charged Diesel
Horsepower	134 HP @ 2 300 RPM
Displacement	3.6 liters
DEF Tank	2.6 gallons
Fuel capacity	40 gallons
Torque	369 ft lbs @ 1 600 RPM
Average fuel consumption	4 gallons per hour

### FRAME / SUSPENSION

Type	Corten Welded Tub
Axles	Torsion Axle
Tires	Solid Rubber

- Suspension system comes with:**
- 2 independent idler wheels with oil hubs and steel face seals
  - 8 solid wheels with grease hubs & dust cap retainers
  - 2 rear drive sprockets

### TRACKS

Rubber 5 ply belts with 29" rubberized aluminum crosslinks

### STEERING

Independent dual joysticks with cable control for each track.

### ELECTRICAL

Voltage	12 V
Batteries, Capacity	2 x 1,060 CCA
Alternator Capacity	120 Amps

### POWER TRAIN FOR HYDROSTATIC DRIVE

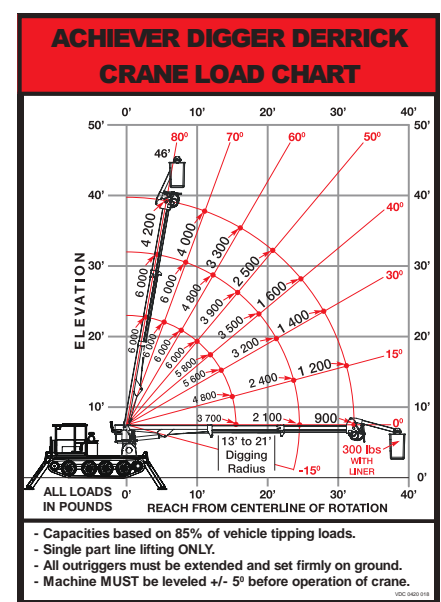
Transmission	Hydrostatic, 2-speed
Parking Brakes	Multi-disc, spring applied & pressure released
Service Brakes	Positive deceleration via hydrostatic transmission

### STANDARD FEATURES

- 24 000 lb ROPS Certified
- 2 Set of Parts & Service Manuals
- Longer 59" hydraulic radial outriggers w/18"x20" pads
- LED High powered lights, Strobe on top

### CRANE SPECIFICATIONS

- 40 ft. sheave height
- Bucket reach 47 ft
- 6,000 lbs capacity tip winch
- Fully hydraulic 2<sup>nd</sup> and 3<sup>rd</sup> boom extension
- Level gauges on tower (2)
- 5 Function Automatic Hydraulic Overload Protection
- 12,000 ft lb auger drive with 2 speed settings
- Auger over storage protection
- 4 way pole claw
- 9/16" Nylon winch rope with swivel hook
- Auger digging: Radius 11' to 19'
- Lifting Capacity 6,000 lbs @ 10' radius



### OPTIONAL EQUIPMENT & ACCESSORIES\*

<b>Cab Options</b> <ul style="list-style-type: none"> <li>• F.O.P.S. Certified Cab</li> <li>• Closed cab with windshield wiper, recirculation fan and heater</li> <li>• Premium cab sound and heat insulation</li> <li>• LHS rear view mirror</li> <li>• LHS rear view mirror with electric heat</li> <li>• RHS rear view mirror</li> <li>• Rear view camera system</li> <li>• Sun visor</li> <li>• 6,000 btu air conditioning</li> <li>• Opening sunroof</li> <li>• Front brushguard</li> <li>• Front and side brushguards for open cab</li> </ul>	<b>Cold Weather Options</b> <ul style="list-style-type: none"> <li>• 120v hydraulic oil heater</li> <li>• Espar coolant heater</li> <li>• 120v Battery heaters</li> <li>• Coolant heater for hydraulic oil</li> <li>• Coolant heater for fuel tank</li> </ul> <b>Lighting Options</b> <ul style="list-style-type: none"> <li>• Additional rear LED light</li> <li>• Remote control spotlight</li> <li>• Outrigger mounted clearance lights</li> <li>• DOT Road lighting</li> <li>• Additional scene lighting</li> </ul>	<b>Engine Options</b> <ul style="list-style-type: none"> <li>• Spark arrestor</li> <li>• Raised air intake</li> </ul> <b>Outrigger Options</b> <ul style="list-style-type: none"> <li>• Extra long (71 in) outriggers (allow deck levelling to within 5° on 12° slopes)</li> <li>• Outrigger pads with ice cleats</li> </ul> <b>Track Options</b> <ul style="list-style-type: none"> <li>• Road wheel oil hubs</li> <li>• Track ice claws</li> <li>• 33" rubber tracks</li> </ul>	<b>Subframe Options</b> <ul style="list-style-type: none"> <li>• 7' Anchor drive tool holder (tools available)</li> <li>• Anchor drive adapter holder (tools available)</li> <li>• Deck hose reel with insulated 30' hoses</li> <li>• High/low pressure deck tools for use with pole jacks</li> <li>• Hydraulic pole jack with tooling and holder</li> <li>• Grounding reel</li> <li>• 1 000 lb cable reel carrier</li> <li>• Front 2 way plow</li> <li>• Front 2 way plow with float</li> <li>• Front plow top extension</li> <li>• Front bumper in lieu of plow</li> <li>• Spare auger holder</li> <li>• Pintle hook</li> </ul>	<b>Winch Options</b> <ul style="list-style-type: none"> <li>• 16,500 lb movable electric winch</li> <li>• 18,000 lb hydraulic winch</li> </ul> <b>Boom Options</b> <ul style="list-style-type: none"> <li>• Folding bucket attachment with full pressure top controls</li> <li>• 2<sup>nd</sup> pin on bucket</li> <li>• Fiberglass 3<sup>rd</sup> &amp; 4<sup>th</sup> boom insulated for Category "C" 46 kVA</li> <li>• Material handling jib</li> <li>• Phase lifter for jib</li> <li>• 12v dc emergency pump</li> <li>• Hydraulic auger release</li> <li>• Dirt or rock augers</li> </ul>
---	---	---	---	---

\* Other features on request. The specifications given are for a basic vehicle tested under ideal conditions. The manufacturer reserves the right to change specifications without notice.



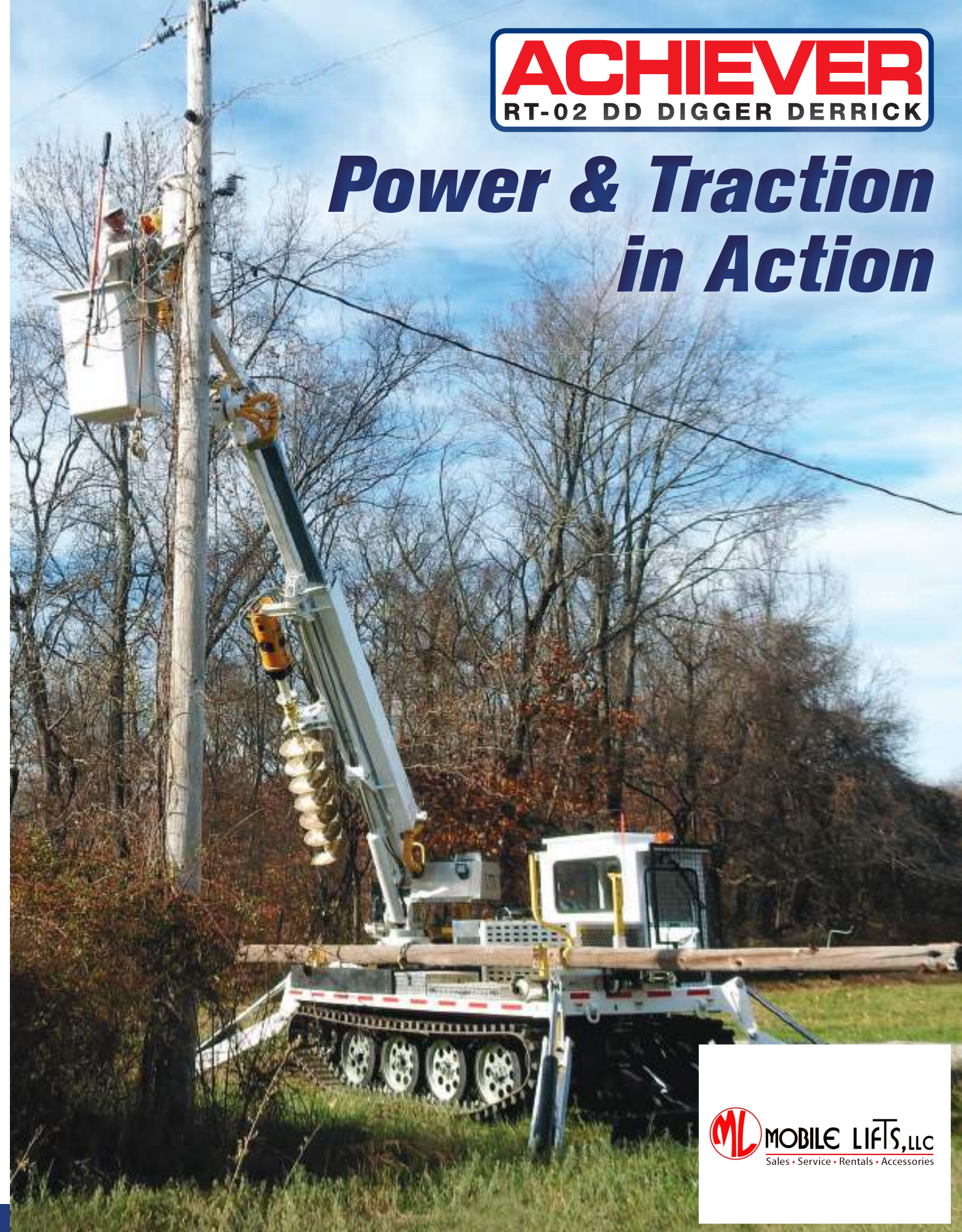
MOBILE LIFTS, LLC 104 G.P. Clement Dr Collegetown, PA 19426 **1-800-717-5438** | MobileLifts.com

FEBRUARY 2022

# ACHIEVER

## RT-02 DD DIGGER DERRICK

# Power & Traction in Action





# OUR RUBBER TRACKED DIGGER DERRICK IS DESIGNED TO SAVE YOU TIME AND MONEY



The only derrick on the market that can climb a 40 degree slope with a low center of gravity to provide excellent sideslope stability



The Achiever can set up to 70' poles



6,000 lb boom tip winch  
On fiberglass 3<sup>rd</sup> boom, Insulated



The optional material handling jib can lift up to 600 lbs



The insulated bucket has a 47' reach and comes with full pressure controls and an optional tool outlet and jib



Low ground pressure means excellent flotation on soft ground



The optional closed cab comes with a front wiper, heater and two opening windows



The Achiever's advanced track and suspension design and powerful engine allow it to go almost anywhere



RT-02 DD Tracked Digger Derrick is easily transportable to jobsite on a dual axle trailer behind a single axle bucket truck