

DTAX2 SERIES

Models: DTAX2-44, DTAX2-42, DTAX2-39

DUR-A-LIFT®



DTAX2-42 PICTURED

SPECIFICATIONS

	DTAX2-44	DTAX2-42	DTAX2-39
WORKING HEIGHT	49'	47'	44'
SIDE REACH	30'	28'	28'
APPROX. STOWED TRAVEL HEIGHT	10'	10'	10'
HEIGHT TO BOTTOM OF PLATFORM	44'	42'	39'
BASKET CAPACITY	350#	400#	400#
APPROX. LIFT WEIGHT	2585#	2450#	2235#
ARTICULATING ARM TRAVEL	-5° to 81°	-5° to 81°	-5° to 81°
MAIN BOOM TRAVEL	-25° to 75°	-25° to 75°	-25° to 75°
EXTENSION TRAVEL	122.5"	110.5"	110.5"

Dur-A-Lift Inc. reserves the right to improve models and change specifications without notice or obligation. Dur-A-Lift equipment meets or exceeds all applicable ANSI Standards as of the date of manufacture.

- TELESCOPIC ARTICULATING, PERSONNEL
- WORKING HEIGHT UP TO 49'
- SIDE REACH TO 30'
- UP TO 400 POUND BASKET CAPACITY
- 180-DEGREE BASKET ROTATOR
- COMPACT DESIGN AND STOWING
- OPTIONS AVAILABLE FOR USE WITH 9' BODY
- INSULATED (DTAX2) OR NON-INSULATED (DTAX2S)

MANY WAYS TO CUSTOMIZE!

DUR-A-LIFT®
WE SPEAK BUCKET TRUCK

DTAX2 SERIES

Models: DTAX2-44, DTAX2-42, DTAX2-39

DUR-A-LIFT
WE SPEAK BUCKET TRUCK

Reach up to 47 feet without the use of outriggers with the DTAX2-42



STANDARD

CONTROLS: Proportional controls; lower controls with override located at the turntable; engine start/stop from the basket; individual control levers.

HYDRAULIC SYSTEM: Rated pressure is 2200 PSI; operating pressure is 2000 PSI; open center hydraulic system; 180° rotating basket.

MECHANICAL SYSTEM: Telescoping and articulating boom action; offset main boom reduces travel height; shear ball rotation driven; fully enclosed worm gear box; non-continuous rotation; insulated extension boom 46kv (DTAX2); 24"x24"x42" basket; 110v outlet at upper controls (DTAX2S).

OPTIONAL

Single hand joystick upper control; outrigger or torsion bars; 12v D.C. backup; fixed basket position (side or end); basket offered in various sizes and configurations; basket liner 50kv (DTAX2); main boom fiberglass insert (DTAX2); chassis isolator art boom fiberglass insert (DTAX2); continuous rotation; tool trays of various sizes; basket and control cover; upper and lower hydraulic tool circuits; tail shelf with walkup.



INSULATED/NON-INSULATED

Available in insulated or non-insulated formats. (Full pressure controls)

DTAX2: insulated (Category C or D)
DTAX2S: non-insulated



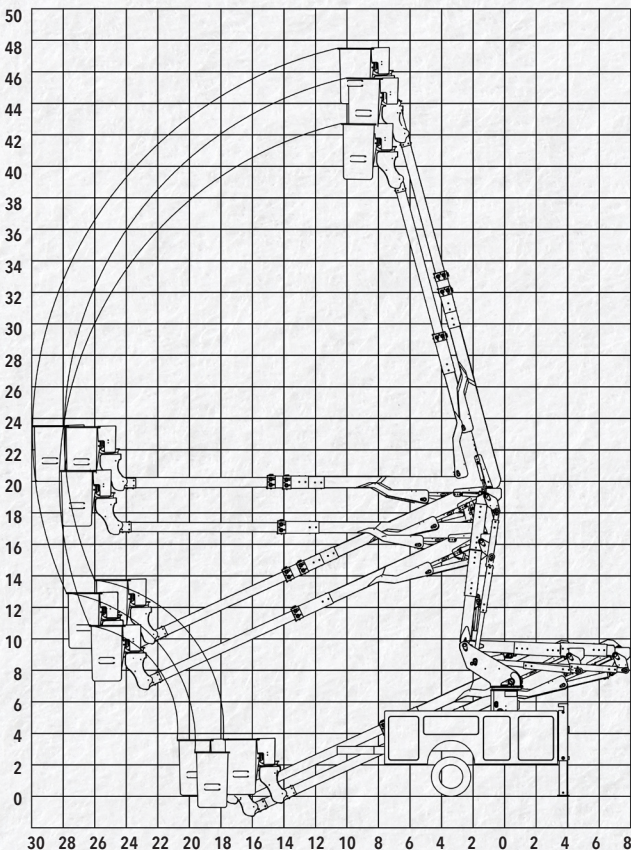
Fiberglass or aluminum 24"x24"x42" basket with walk-in option

Ask about larger basket options,

Negative boom angle allows for ground level access from the basket.



REACH DIAGRAM



CHASSIS REQUIREMENT, MIN.: 15,000 GVWR (DTAX2-39/42); 19,000 GVWR (DTAX2-44)
CHASSIS CAB TO AXLE REQUIREMENT, MIN.: 60"-84" (DTAX2-39); 84" (DTAX2-42/44)

BUILT FOR YOU

Ask about available chassis, body, tailshelf, and basket options.



READ MORE

ML MOBILE LIFTS, LLC
Sales • Service • Rentals • Accessories

104 G.P. Clement Dr, Collegeville, PA 19426
1+ (610) 489-1900
www.MobileLifts.com